



RX - 2505PU

All-In-One Energy Storage System
(Uninterrupted Power System)

www.redxenergy.com.au

- This document is subject to change from time to time due to product upgrades or other reasons. This document is not a substitute for the user manual or safety instructions.
- Please read the user manual and related standards before undertaking any operation or commissioning. Please take time to access <http://www.redxenergy.com.au> or scan the QR code for the latest quick installation guide.
- Prior to commencement, check whether the goods match the packing list, if there is any damage to any items or components missing, please contact the Distributor / Dealer or Redx.
- The power cables must be intact and well insulated. Please use insulating gloves and wear personal protective equipment at all times when installing this product.
- Failure to comply with any of the above requirements may result in injury to personnel or damage to equipment.

Redx shall not be liable for any loss of life or damage caused by failure to comply with the requirements of this document and user manual.

Safety Statement

Danger

- Shock hazard !
- Exposure to sunlight and the elements are not recommended.
- All electrical connections must meet local and national electrical standards.
- Only connect the system to the grid with local authority approval .
- Warranty will be void if the cover is removed. Improper opening of the unit may also result in serious electrical shock or injury to personnel.

Warning

All safety labels, warning labels, and nameplates must be clear and visible and cannot be removed or overwritten.







Warning

Hot surface!
Inverter module may become hot after extended period of operation. Allow time for inverter to cool before touching!

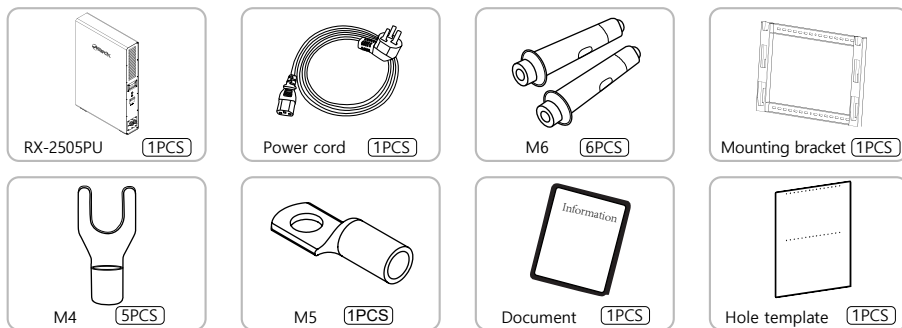
Notice

The country setting and protection parameters must be set by professional personnel based on local power grid standards.
Incorrect country settings may affect the operation failure to meet the local standard.

Warning Label

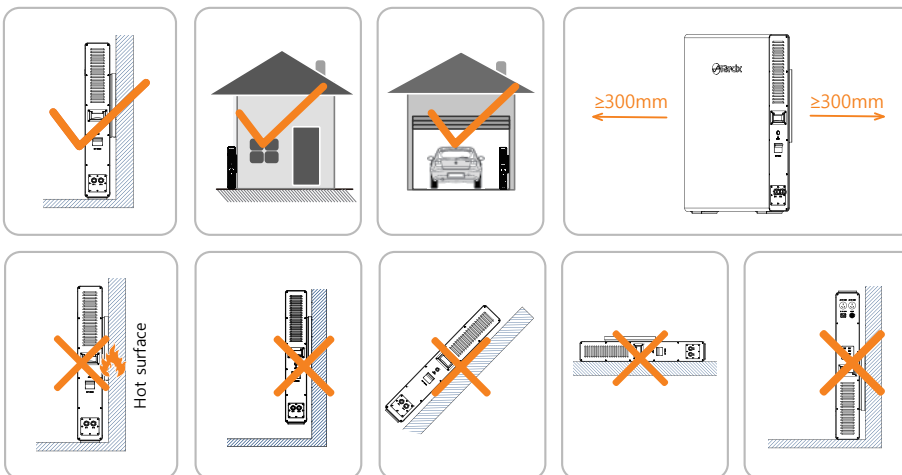
 Disconnect all external power supplies before maintainance.	 Hot surfaces !
 Device only has high voltage on AC input and AC output. professional and qualified technicians are not required to install this unit.	 Read the instructions before operation.
  Wait for 5 minutes before touching the internal conductive components after system turn off and disconnected from grid.	

Packing List

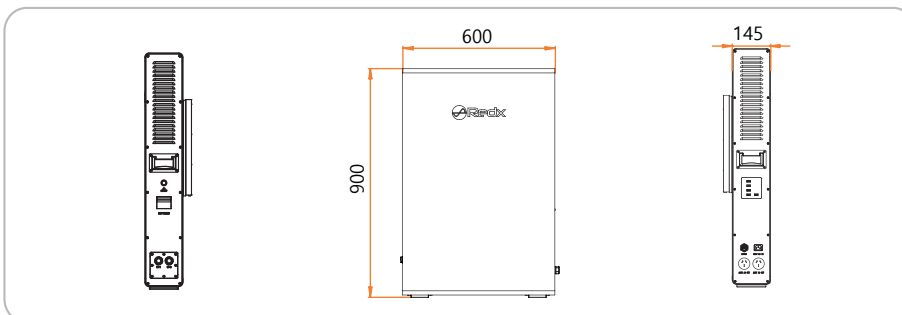


- This drawing is for reference only. Please refer to the actual product.

Installation Location



Dimension



[http:// www.redxenergy.com.au](http://www.redxenergy.com.au)



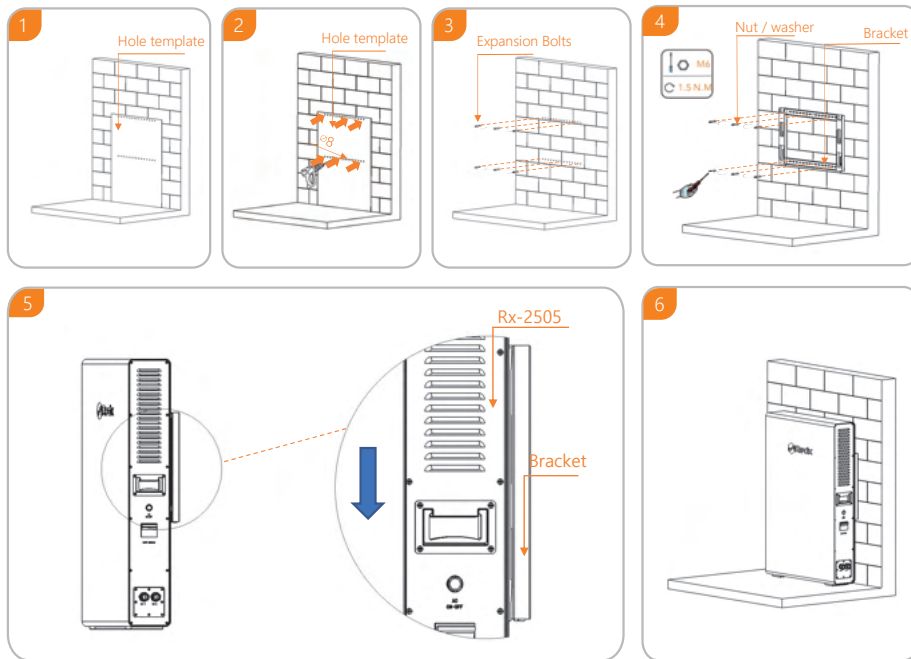
APP Download



The size and parameters of the product are subject to change without notice.

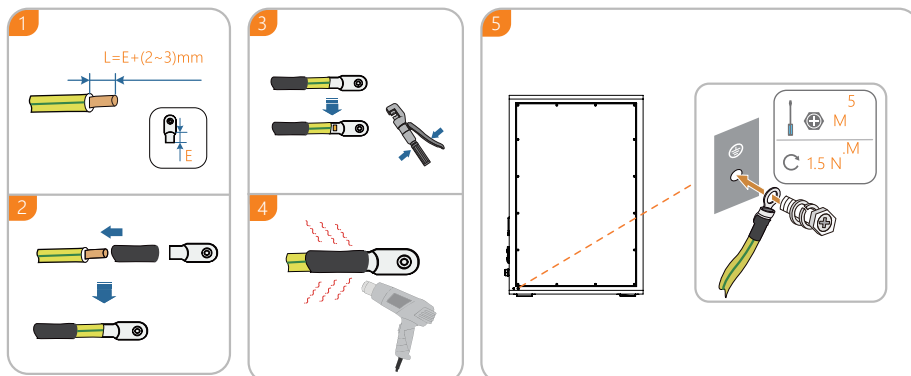
Installation

Avoid water and electricity when drilling, bit size $\varnothing 8\text{mm}$, drilling depth 40mm.

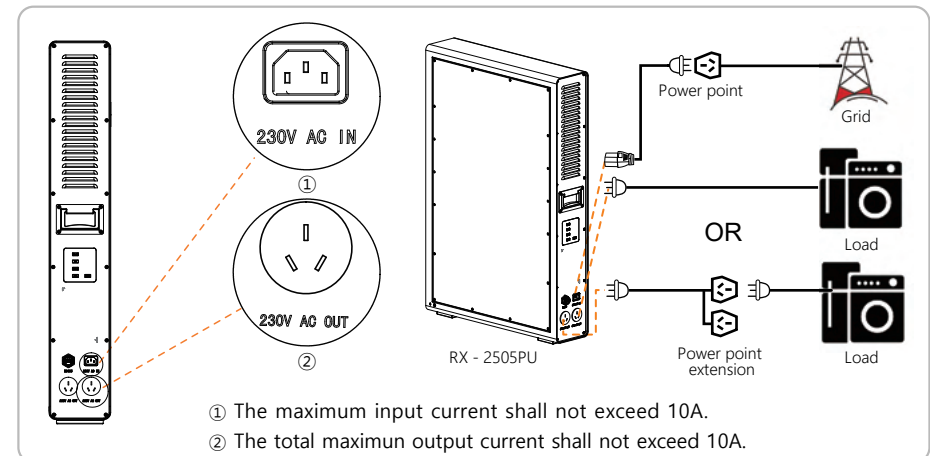


• This figure is for reference only, please refer to the actual product!

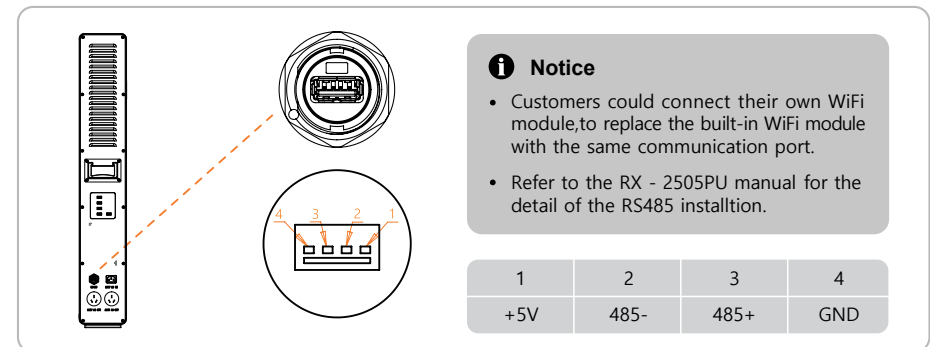
Grounding Connection



AC input / output

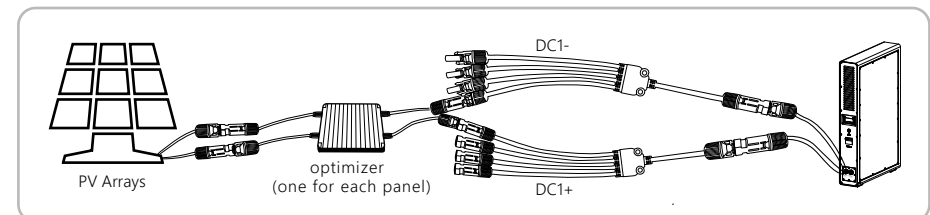


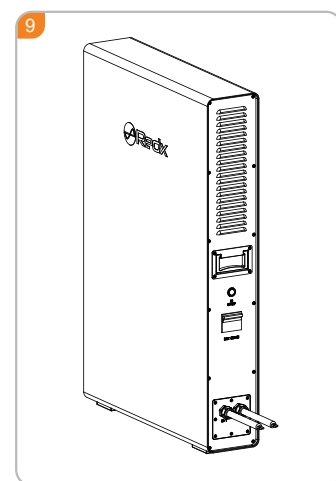
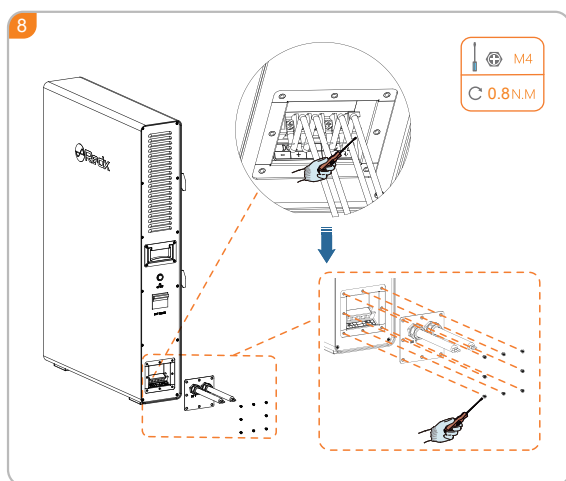
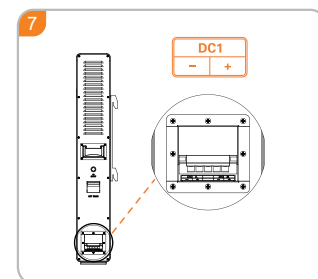
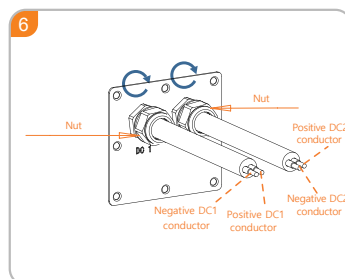
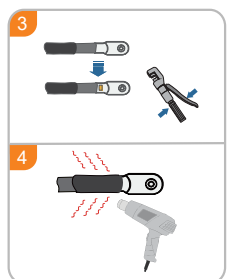
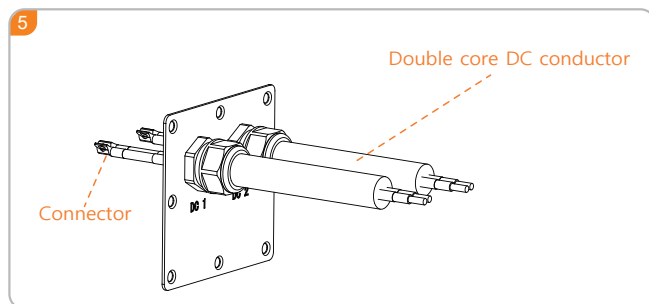
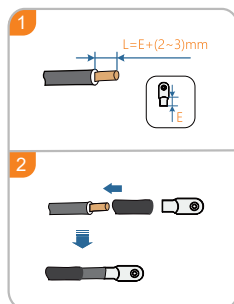
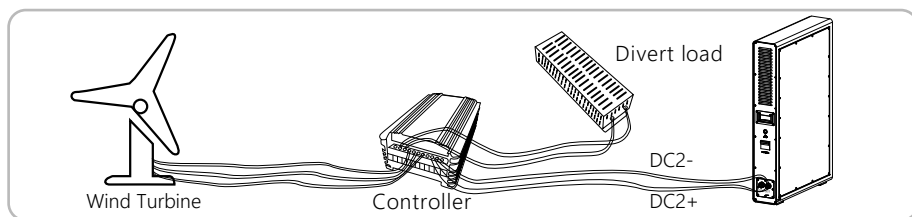
RS485 Installation



Connect cables to DC1 and DC2 (Optional function)

Connect cables to DC1 and DC2 :
The functions of Wind Turbine and PV Arrays can be installed according to the needs of customers.





Pre - operation inspection

	Checking Items	Result	
		YES	NO
①	The installation location meets the requirement.	<input type="checkbox"/>	<input type="checkbox"/>
②	The system has been securely installed.	<input type="checkbox"/>	<input type="checkbox"/>
③	Sufficient space for heat dissipation. No objects are left in the system.	<input type="checkbox"/>	<input type="checkbox"/>
④	System wiring is normal and firm.	<input type="checkbox"/>	<input type="checkbox"/>
⑤	Cables are properly installed and well protected without any damage.	<input type="checkbox"/>	<input type="checkbox"/>
⑥	All terminals have been sealed.	<input type="checkbox"/>	<input type="checkbox"/>
⑦	Warning labels are not covered without alteration or occlusion.	<input type="checkbox"/>	<input type="checkbox"/>

Operation

Following the steps to start the system.

Step① : Connect to the grid (if available) and connect PV or Wind to DC1 and DC2.

Step② : Turn on the battery isolation circuit breaker.

Step③ : Turn on the power button.

Step④ : Download the Redx App, follow the App instructions.

Step⑤: Complete all steps in the App instructions.

LED Status

<div> <div>AC-ON</div> <div>DC</div> <div>GRID</div> <div>CHG</div> <div>BATT</div> </div>	Operating status		Normal – Green
			Fault – Red
DC			NO DC – Led off
			DC1 > 100W – Green (Flash)
			DC2 > 100W – Blue (Flash)
GRID			DC1&DC2 > 100W – Yellow (Flash)
			Grid connected – Green
CHG			Grid disconnected – Blue
			Charging – Green
BATT			Discharging – Blue
			Battery status

Notice

- If the startup fails, refer to "Troubleshooting" in the user manual.
- For details about LED indicators, refer to the user manual.