



RX - 2505AC

All-In-One Energy Storage System
Quick Installation Guide

- This document is subject to change from time to time due to product upgrades or other reasons. This document is not a substitute for the user manual or safety instructions.
- Please read the user manual and related standards before undertaking any operation / commissioning. Please take time to access <http://www.redxenergy.com.au> or scan the QR code for the latest quick installation guide.
- The installation must be completed by well trained, qualified professional technicians. Technicians must be familiar with safety specifications of electrical systems.
- Prior to commencement, check whether the goods match the packing list, if there is any damage to any items or components missing, please contact the Distributor / Dealer or Redx.
- The power cables must be intact and well insulated. Please use insulating gloves and wear personal protective equipment at all times when installing this Product.
- Failure to comply with any of the above requirements may result in injury to personnel or damage to equipment.

Redx shall not be liable for any loss of life or damage caused by failure to comply with the requirements of this document and user manual.

Safety Statement

Danger

- Shock hazard !
- Exposure to sunlight and the elements is not recommended
 - All electrical connections must be completed by professional technicians only.
 - All electrical connections must meet local and national electrical standards.
 - Only connect the system to the grid with local authority approval .
 - Warranty will be void if the cover is removed. Improper opening of the unit may also result in serious electrical shock or injury to personnel.

Warning

All safety labels, warning labels, and nameplates must be clear and visible and cannot be removed or modified.







Warning

Burn hazard !
Do not touch the inverter module for maintenance immediately after long time operation.

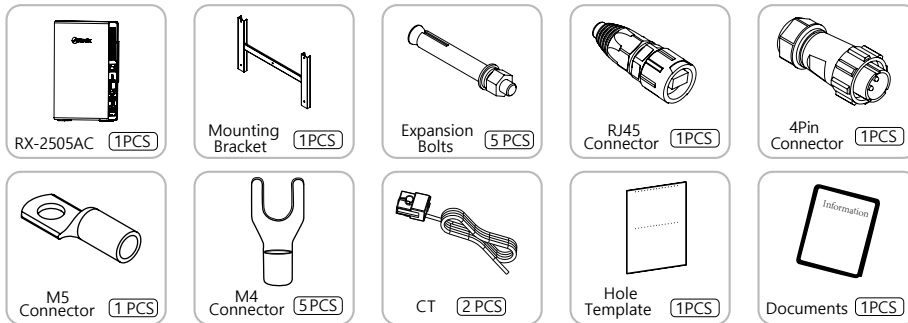
Notice

The country settings and protection parameters must be set by professional technician based on local power grid standards.
Incorrect country settings may affect the operation of the unit adversely and may result in failure to meet the local standard.

Warning Label

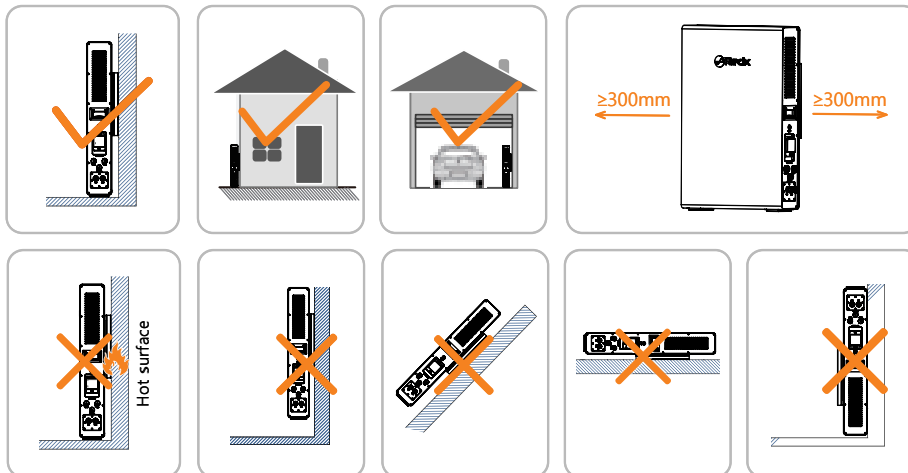
 Disconnect all external power supplies before maintainace.	 Hot surfaces !
 High Voltage ! Only professional and qualified technicians are allowed to install and operate	 Read all instructions before operation.
  Wait for 5 minutes before touching the internal conductive components after system has been turned off and disconnected from grid.	

Packing List

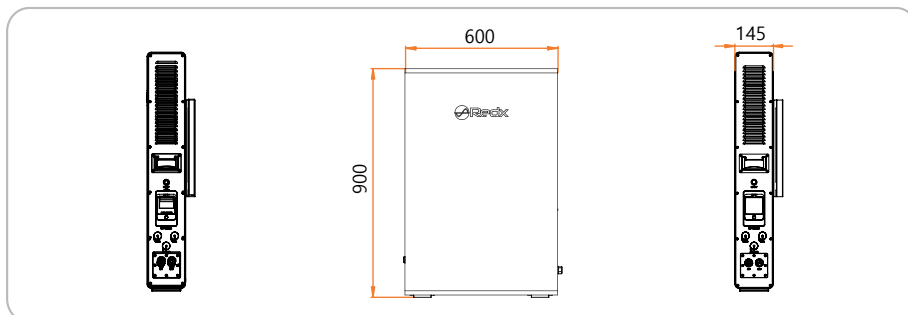


- This drawing is for reference only. Please refer to the actual product.

Installation Location



Dimension



Redx App Download



[http:// www.redxenergy.com.au/downloads/](http://www.redxenergy.com.au/downloads/)



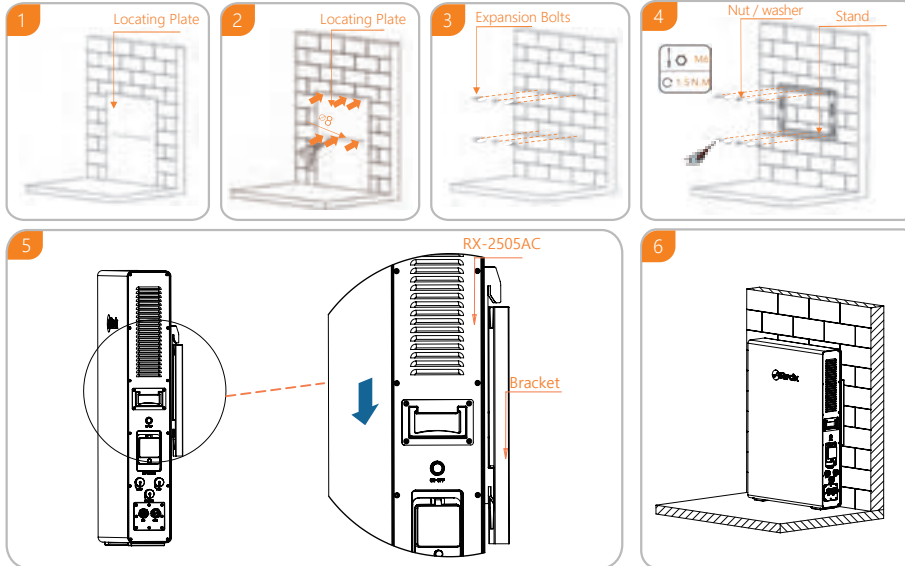
[http:// www.redxenergy.com.au](http://www.redxenergy.com.au)



The size and parameters of the product are subject to change without notice.

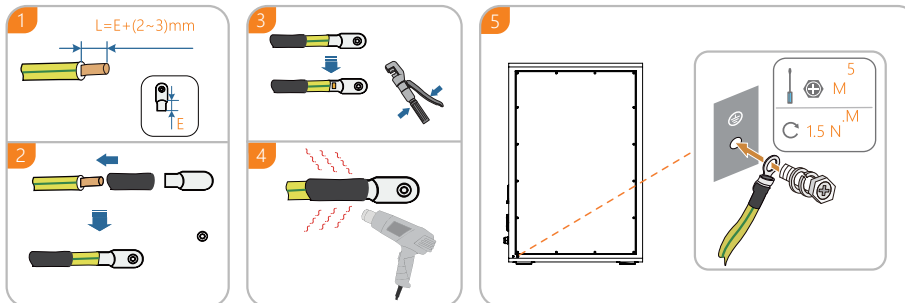
Installation

Avoid water and electricity when drilling, bit size $\phi 8\text{mm}$, drilling depth 40mm.

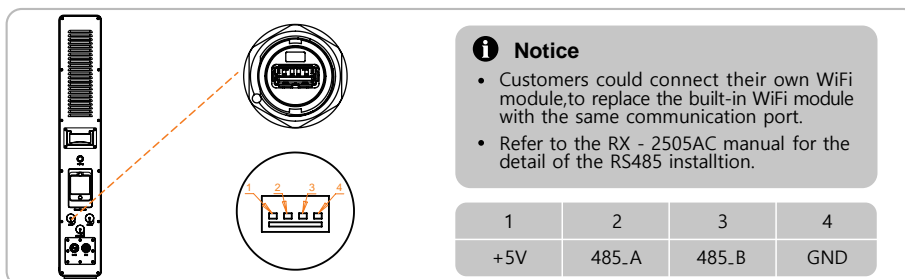


• This figure is for reference only, please refer to the actual product!

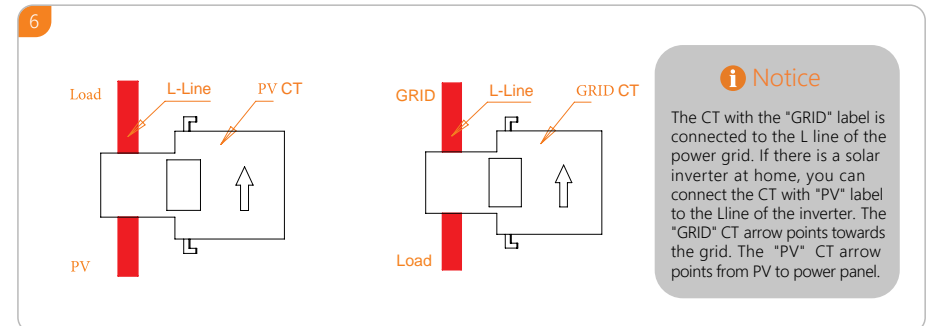
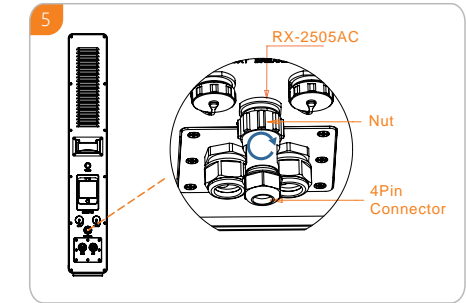
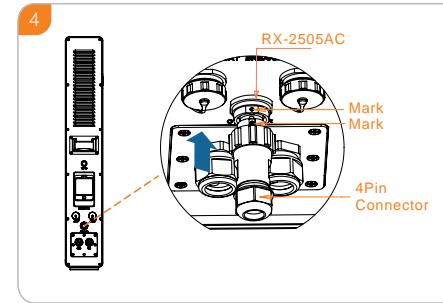
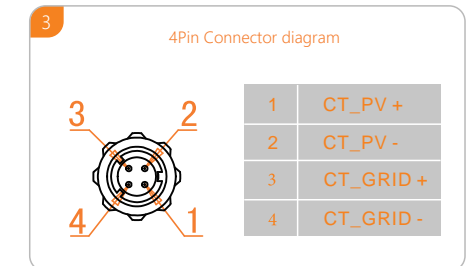
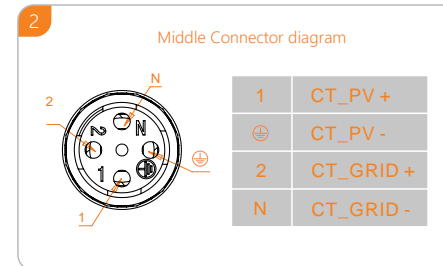
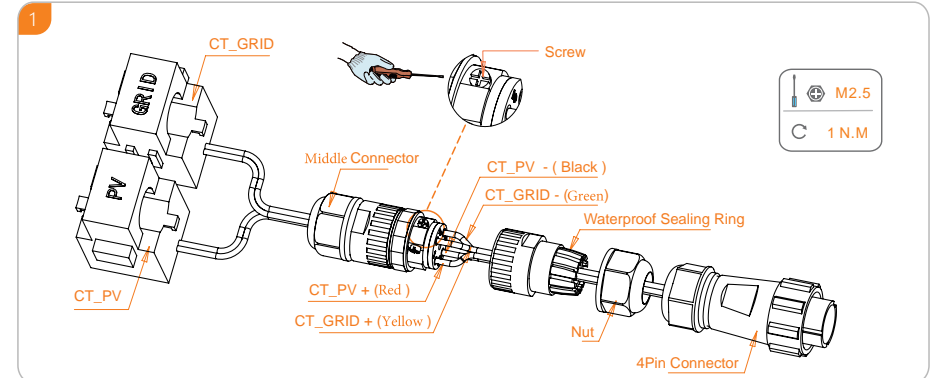
Grounding Connection



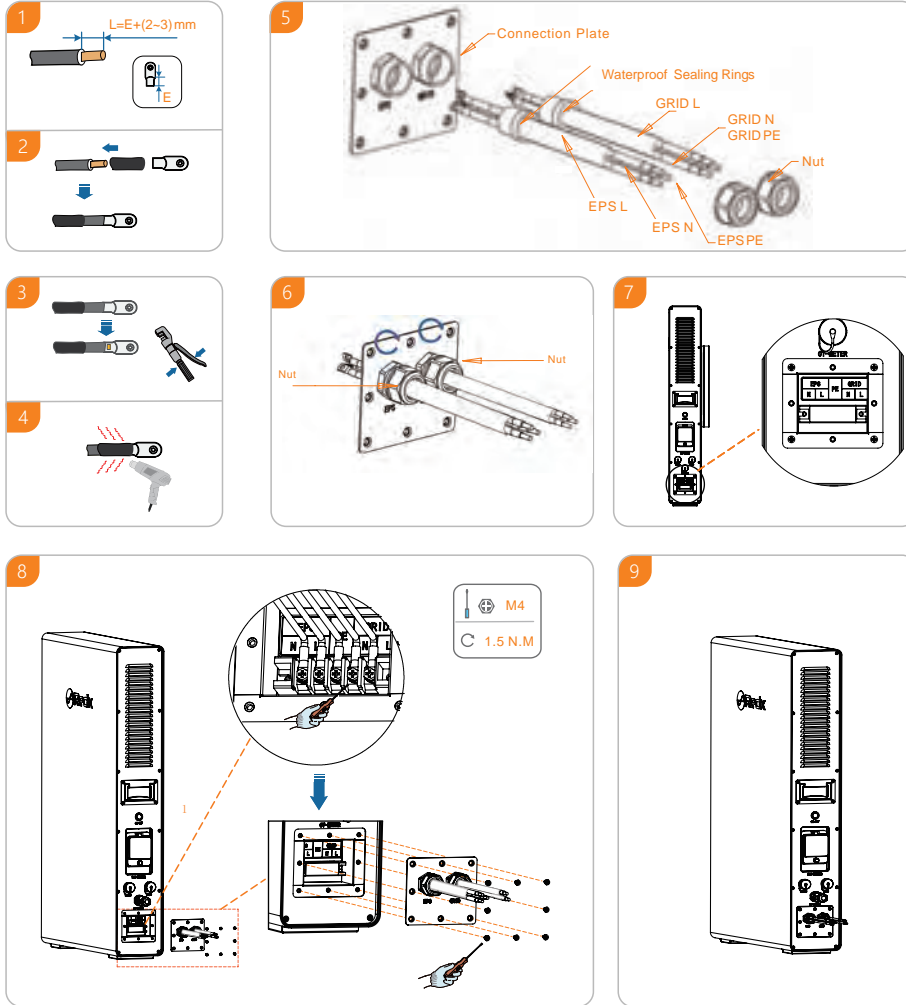
RS485 Installation



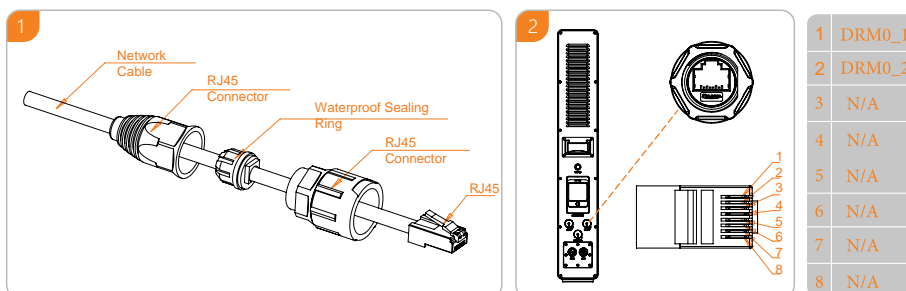
CT or smartmeter Installation (choose one of them)



On/Off grid installation



DRM0 Installation



Pre - Operation Inspection

	Checking Items	Result	
		YES	NO
①	The installation location meets the requirement.	<input type="checkbox"/>	<input type="checkbox"/>
②	The system has been securely installed.	<input type="checkbox"/>	<input type="checkbox"/>
③	Sufficient space for heat dissipation. No objects are left in the system.	<input type="checkbox"/>	<input type="checkbox"/>
④	System wiring is correct and firm. Refer to 240V diagram for more information.	<input type="checkbox"/>	<input type="checkbox"/>
⑤	Cables are properly installed and well protected without any damage.	<input type="checkbox"/>	<input type="checkbox"/>
⑥	The selection of AC circuit breaker meets local standard.	<input type="checkbox"/>	<input type="checkbox"/>
⑦	All terminals have been sealed.	<input type="checkbox"/>	<input type="checkbox"/>
⑧	Warning labels are not covered without alteration or occlusion.	<input type="checkbox"/>	<input type="checkbox"/>

Operation

Following the steps to start the system.

Step ① : Connect to the grid.

Step ② : Turn on the battery isolation circuit breaker.

Step ③ : Turn on the power button.

Step ④ : Download the Redx Power App, QR Code for App download is on flip side of the document

Step ⑤ : Complete all steps in the App instructions.

LED Status

	Operating status	RUN	Operation----Green
			Fault----Red
		VPP	Monitoring ----Green(Flash)
			Remote Control ----Blue(Flash)
		GRID	Grid ----Green
			No Grid ----Blue
		BAT	Charge---Green
			Discharge---Blue
		SOC	Battery Capacity

Notice

- If the startup fails, refer to "Troubleshooting" in the user manual. For details about LED indicators, refer to the user manual.