



INNOVATION IN POWER & STORAGE TECHNOLOGY

Redx Energy

RX-0050B

BATTERY

Redx Energy (Redx)

is an Australian owned and operated company, a leader in innovative inverter power and storage technology.

With a passion for innovation, Redx holds over 30 technology patents that are groundbreaking in the inverter space.

The Australian Office manages software engineering, new product design, technology support and after sales service. With local expertise, Redx can respond quickly to customer enquires and also has the agility to provide customised solutions.



Australian designed



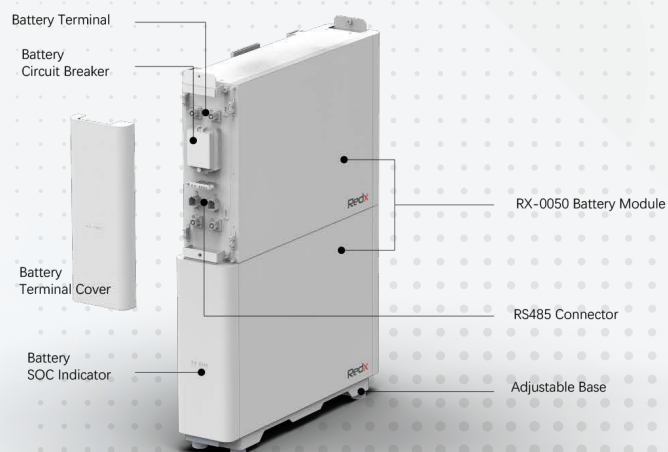
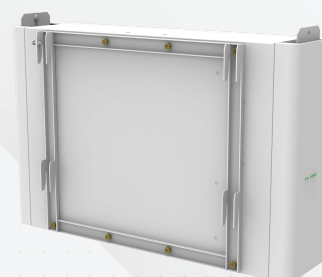
VPP ready



High efficiency



Easy install



2 4G Data logger is optional, please contact your local reseller for more information



RX-0050B Spec Sheet

No.	Items	Parameters
1	Cell type	Prismatic
2	Nominal voltage	3.2V
3	Rated capacity	100AH
4	Rated energy	320WH
5	Internal resistance	$\leq 0.4\text{m}\Omega @ 25^\circ\text{C} 1\text{kHz AC}$
6	Allowed MAX charging current	1C
7	Recommended charging current	$\leq 0.5\text{C}$
8	Allowed MAX discharging current	1C @ $25 \pm 5^\circ\text{C}$, SOC > 20%
9	Maximum pulse discharging current	2C @ $25 \pm 5^\circ\text{C}$, 10s, SOC $\geq 20\%$

Battery Module Parameters

No.	Items	Parameters
1	Product name	LiFePO4 Battery System
2	DC Ratings	51.2V, 50A, 2500W
3	Depth of Discharge	90%
4	Useable Capacity	90 Ah, 4.6kWh
5	Input	Max 56.8V d.c., 60A
6	Output	43.2 ~ 56.8V d.c., Max 60A, 2500W
7	Charging Temperature Range	$0^\circ\text{C} \sim 45^\circ\text{C}$
8	Discharging Temperature Range	$-10^\circ\text{C} \sim 55^\circ\text{C}$
9	Internal resistance	$\leq 20\text{m}\Omega @ 1\text{kHz AC}$
10	Rated charge voltage	58.4V
11	Short Circuit Protection	500A
12	Short Circuit Protection Delay Time	200 - 800 us
13	Communication Port Type	CAN
14	Communication Protocol	RS485
15	Wi-Fi / LAN connection capability	No comply
16	Allowed MAX charging current	60A @ $25 \pm 5^\circ\text{C}$
17	Recommended charging current	$\leq 50\text{A}$
18	Allowed MAX discharging current	60A @ $25 \pm 5^\circ\text{C}$
19	Dimensions	W:400 \pm 2mm D:620 \pm 2mm H:145 \pm 2mm
20	Weight	About:56kg
21	IP Class	IP55



Members of:



Redx Technology Australia Pty Ltd
Unit 2/21 Millennium Circuit
HELENSVALE QLD 4212

+61 (0) 7 5672 9983
sales@redx.com.au
www.redx.com.au

Redx

Country of manufacture: China