



INNOVATION IN POWER & STORAGE TECHNOLOGY

# Redx RX-7000HY

## Hybrid Inverter

### Redx Energy (Redx)

is an Australian owned and operated company, a leader in innovative inverter power and storage technology.



**With a passion for innovation, Redx holds over 30 technology patents that are groundbreaking in the inverter space.**

The Australian Office manages software engineering, new product design, technology support and after sales service. With local expertise, Redx can respond quickly to customer enquires and also has the agility to provide customised solutions.



**7000W  
discharge**



**On-Off Grid  
functions**



**VPP  
ready**



**Hybrid  
inverter**



**Quick  
installation**



**Single stage  
inverter**



## Redx RX-7000HY

The **RX-7000HY** inverter is an all-in-one hybrid inverter designed to achieve the highest efficiency using Redx patented Single Stage Buck-Boost Inverter with Step Modulation.

### INPUTS

The Redx inverter provides a versatile range of input power options including solar and wind. The RX-7000HY is also capable of controlling a back up generator and supports generator input.

The RX7000 is a powerful on/off grid hybrid inverter capable of powering your home 24/7.

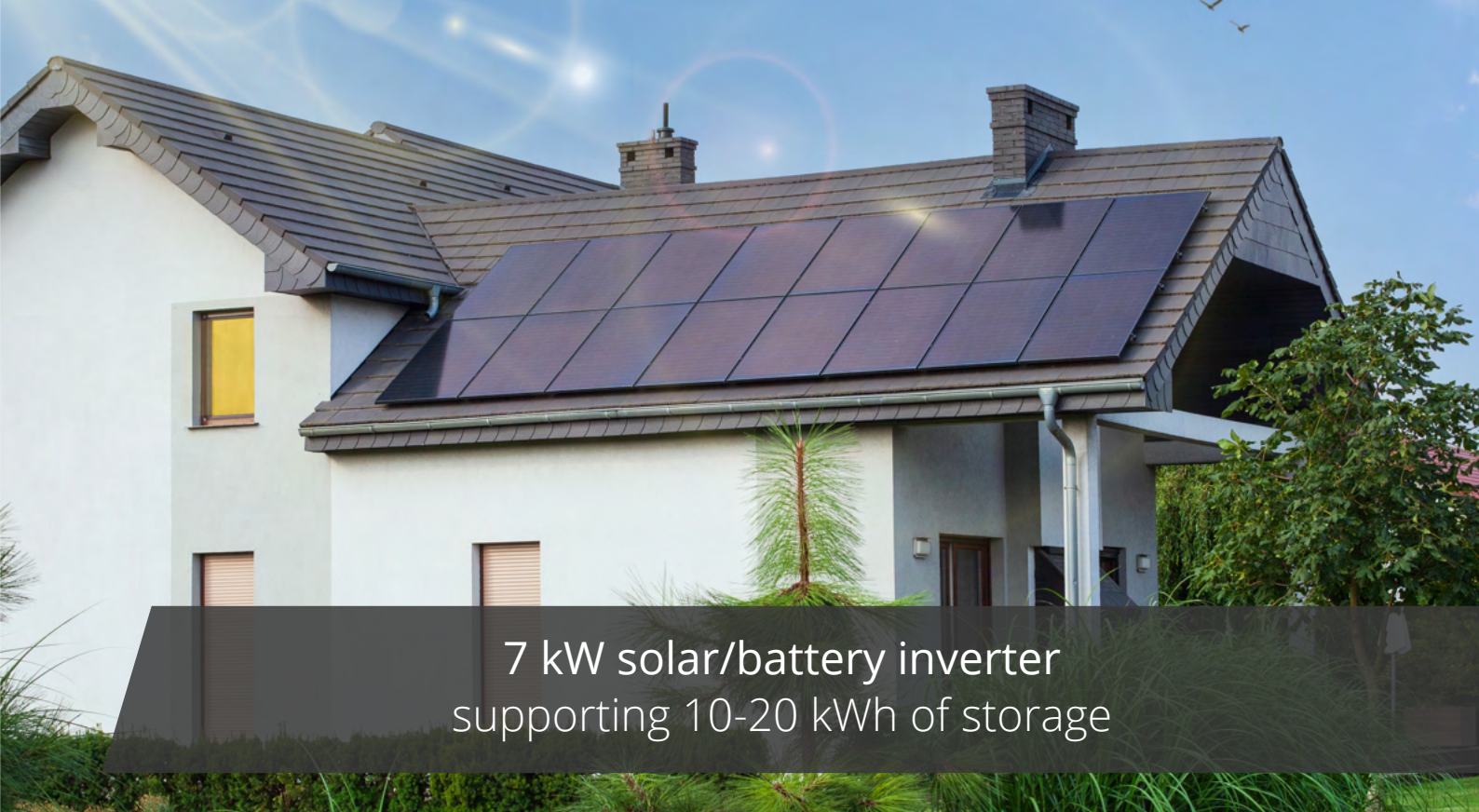
### SOFTWARE & MONITORING

Through the monitoring platform Solar Installers can manage their fleet of installations and proactively respond to customers. The cloud-based software platform Redx™ Power and App enables customers to track generation, consumption and storage, with the ability to trade power.

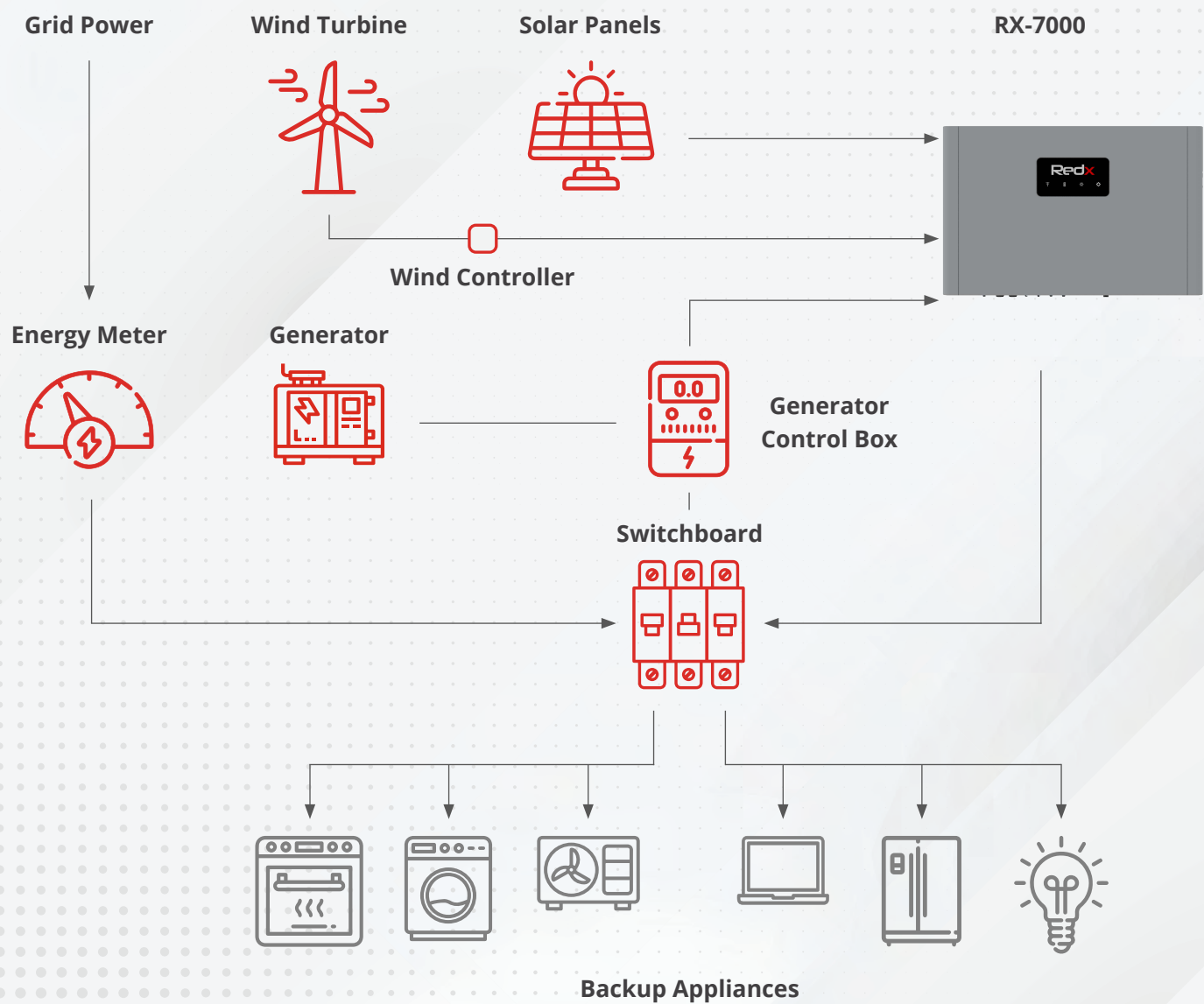
### VPP & TRADING

Customers can keep track of their generation and savings with the ability to trade power. With VPP-ready hardware and software, the RX-7000 provides the ultimate next generation with cloud-based real time control, trading and monitoring.





7 kW solar/battery inverter  
supporting 10-20 kWh of storage



# Redx RX-7000HY

## 7,000 Watt solar/battery inverter



### INVERTER

| AC Inputs (Grid Port)                |                                 |
|--------------------------------------|---------------------------------|
| AC Input Voltage                     | 170 V - 280 V                   |
| AC Input Nominal line Frequency      | 50/60Hz +/- 10%                 |
| Switching time (on-off grid)         | <50ms                           |
| Max input current (charge mode 0.3C) | 40A (bypass mode + charge mode) |
| Generator control & input            | Yes                             |

| AC Outputs (Grid and EPS Load Ports)  |                            |
|---------------------------------------|----------------------------|
| AC Output Voltage / Frequency         | 230V / 50Hz +/- 0.10Hz     |
| Inverter Max efficiency               | 96%                        |
| Total Harmonic Distortion (THD)       | <2%                        |
| Power Factor Nominal Range            | 0.8 leading to 0.8 lagging |
| Max efficiency - battery to AC output | 96.50%                     |
| Maximum Output Power - Battery only   | 5,000W                     |

| Grid Port AC Output               |         |
|-----------------------------------|---------|
| Rated Current                     | 30.5A   |
| Maximum Output Power - Continuous | 7,000W  |
| Maximum Output Power - 60 seconds | 8,000W  |
| Max output current                | 35A     |
| Rated Power                       | 7,000VA |

| EPS Load AC Output |         |
|--------------------|---------|
| Max output current | 25A     |
| Rated current      | 22A     |
| Rated Power        | 5,000VA |

### CERTIFICATION, SAFETY, EMC & WARRANTY

|              |  |
|--------------|--|
| Certificates | SAA  |
| Safety & EMC | IEC62109-1, IEC62109-2, IEC62040, EN61000-6-1, EN61000-6-2, EN61000-6-3, EN61000-6-4, AS4777.2 |
| Warranty     | 10 years   |

### MECHANICAL

|            |                             |
|------------|-----------------------------|
| Weight     | 35kg                        |
| Dimensions | 400mm H * 620mm W * 162mm D |

<sup>1</sup> Manufacturer specified test conditions.

Product specifications are subject to change without prior notice.

### DC PORTS

|  |                                   |
|--|-----------------------------------|
| PV Port Max Current / Voltage          | 15A / 550V                        |
| PV Max DC short-circuit Current        | 20A / 20A / 20A                   |
| PV Port Voltage (MPPT)                 | 120V-530V                         |
| No. of independent MPP Ports           | 3                                 |
| MPPT max power output / (Total)        | 3kW/3kW/3kW / (9kW)               |
| 56V Auxiliary DC Port Voltage Range    | 56V - 60V                         |
| 56V Auxiliary DC Max Current / Power   | 40A / 2kW                         |
| BAT LV Port Max Current / Power        | 115A / 5kW                        |
| Battery Port Voltage Range             | 42V - 60V                         |
| Compatible battery (Battery Chemistry) | RX-0050 ( Lithium Iron Phosphate) |
| HV DC Port Max Current                 | 20A                               |
| HV DC Port Voltage Range               | 250V - 360V                       |
| HV DC Port Rated Voltage / Power       | 307.2V / 5kW                      |

### GENERAL

|                                      |                         |
|--------------------------------------|-------------------------|
| Internal on/off                      | Yes                     |
| Protection Functions                 | Yes                     |
| Current sensors                      | Yes                     |
| High Voltage Battery supported       | Yes                     |
| External communication port          | RS485                   |
| Status indicator display             | Yes                     |
| Embedded software package (optional) | VPP & Peak Shaving      |
| VPP-ready/remote control             | Yes                     |
| Communication                        | Modbus, RS485, Wifi, 4G |
| Country of manufacture               | China                   |

### ENVIRONMENTAL / OPERATIONAL RANGE

|                             |                 |
|-----------------------------|-----------------|
| Ingress rating              | IP65            |
| Operating temperature range | -20°C~50°C      |
| Cooling                     | Natural cooling |
| Relative Humidity           | 10-100%         |



#### Members of:



**Redx Technology Australia Pty Ltd**  
Unit 2/21 Millennium Circuit  
HELENSVALE QLD 4212

+61 (0) 7 5672 9983  
sales@redx.com.au  
redx.com.au

# Redx